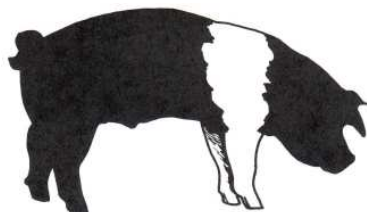


Department G -- SWINE

Jared Frueh, Superintendent..... jaredfrueh@hotmail.com (815)-440-8738 Princeton, IL



Entry fee: Per entry \$15.00
 Pen fee: Per head \$4.00
 Exhibitors fee: Per ticket \$15.00

| | | |
|---------------|---------------------|-----------------------|
| Arrival time: | Wednesday August 24 | <u>4 pm</u> |
| Open Show: | Thursday, August 25 | 5:00 pm |
| Release time: | Thursday, August 25 | <u>Following show</u> |

Bureau County Jackpot Swine Show

| | | 1st | 2nd | 3rd | 4th | 5th |
|----------------|----|-------|-------|-------|-------|-------|
| Payout based | 1 | \$ 18 | | | | |
| upon Number | 2 | \$ 18 | \$ 11 | | | |
| Entered in Lot | 3 | \$ 20 | \$ 12 | \$ 9 | | |
| | 4 | \$ 22 | \$ 14 | \$ 11 | \$ 9 | |
| | 5 | \$ 24 | \$ 15 | \$ 12 | \$ 11 | |
| | 6 | \$ 25 | \$ 16 | \$ 15 | \$ 12 | \$ 9 |
| | 7 | \$ 27 | \$ 18 | \$ 17 | \$ 14 | \$ 11 |
| | 8 | \$ 30 | \$ 24 | \$ 18 | \$ 16 | \$ 12 |
| | 9 | \$ 32 | \$ 25 | \$ 19 | \$ 16 | \$ 14 |
| | 10 | \$ 36 | \$ 27 | \$ 21 | \$ 18 | \$ 15 |

1. Entries close at 6:00 pm Monday August 15, 2011 or must be postmarked by August 15, 2011.
Late entries will be accepted (see late entry fee)
2. Barrows and Crossbred Gilts will weigh between the hours 5-7 pm on Wednesday.
3. All Gilts show as breeding Gilts.
4. Registration papers will be required on all Purebred Gilts.
5. Health papers are required.
6. **Premiums will be awarded based on number of entries per class.**
7. Showmanship will start at 5:00 pm followed by gilts then barrows.
8. See rules and regulations of the Bureau County Agricultural Board and Livestock Open Class.

PUREBRED GILT CLASSES

* Use appropriate class number in entry form

- | | |
|--------------|--------------|
| 1. BERKSHIRE | 5. POLAND |
| 2. CHESTER | 6. SPOTTED |
| 3. DUROC | 7. YORKSHIRE |
| 4. HAMPSHIRE | 8. CROSSBRED |

G-*-601 January Gilt
G-*-602 February Gilt
G-8-603 Crossbred Gilt

CHAMPIONS

| | | |
|----------|--------------------------------|------------------------------|
| G-99-604 | Grand Champion Gilt | \$200.00 & Plaque |
| G 99-605 | Reserve Champion Gilt | \$100.00 & Plaque |
| G-*-611 | Grand Champion Gilt each Breed | \$50.00 |
| G-*-612 | Reserve Champion each Breed | \$25.00 |

CLASS 9 MARKET BARROW SHOW

G-9-606 Market Barrow

CHAMPIONS

| | | |
|----------|-------------------------|------------------------------|
| G-99-607 | Grand Champion Barrow | \$200.00 & Plaque |
| G-99-608 | Reserve Champion Barrow | \$100.00 & Plaque |

SHOWMANSHIP

Showmanship will be divided by age, sign up on show day. Cash and prizes will be awarded in each division.

| | | |
|----------|-----------------------------|---------------|
| G-99-609 | Showmanship ages 14 & under | Plaque |
| G-99-610 | Showmanship ages 15-19 | Plaque |

**Fertilizers • Seed Treatments
Microbial Soil Inoculants
Residue Treatments**



AgriEnergy Resources

21417 1950E Street – Princeton, IL 61356

Ph: 815-872-1190 www.agrienergy.net info@agrienergy.net Fax: 815-872-1928

G - Swine – Open Show Entry Form

Bureau County Fair - August 24-28, 2011

Exhibitor's Name _____ Premise ID # _____

(**Optional in 2011**)

Mailing Address _____

City _____ State _____ Zip _____

Telephone # _____ Social Security # _____

Entries must be made by 6:00 pm Monday August 15, 2011.
 All late entries & changes will be charged an additional **\$25.00 per entry**.
 No changes or entries allowed 24 hours before show.

| Department | Open Show Per Entry Fee | Stall / Pen Fees | Stalls requested |
|------------|-------------------------|--------------------------------|------------------|
| Swine | _____ @ \$ 15.00 _____ | _____ @ \$ 4.00 Per Head _____ | _____ |
| | TOTAL _____ | TOTAL _____ | |

Exhibitor ticket number _____

Issued _____

Open Show Entry Fee _____

Stall/Pen/Tack Fee _____

Exhibitor Ticket \$15.00 (each) _____

TOTAL AMOUNT ENCLOSED _____

Entries can be mailed (Bureau County Fair, P.O. Box 238, Princeton, IL, 61356-0238), hand-delivered to the office, faxed (815-879-7005), or emailed (**bcfair@frontier.com**). No Refunds.

| | Department Letter | Class/Breed Number | Lot Number | Description |
|---------|-------------------|--------------------|------------|---------------------|
| Example | G | 1 | 601 | Gilts – Single gilt |
| 1 | | | | |
| 2 | | | | |
| 3 | | | | |
| 4 | | | | |
| 5 | | | | |
| 6 | | | | |
| 7 | | | | |
| 8 | | | | |
| 9 | | | | |
| 10 | | | | |
| 11 | | | | |
| 12 | | | | |